



DIN EN ISO 1520



Deep Drawing Cup Test

**Cupping and
Deep Drawing Cup
Test Machine,
Model 242-Basic**



Square Cup Test



testing equipment for quality management



ERICHSEN Cupping Test

Deep Drawing Cup Test

**Electro-hydraulic Drive
Programmable Logic Control
Fully Automatic Test Sequence**

Product

Fully automatic cupping and deep drawing cup test machine for testing the ductility of coated, ferrous and non-ferrous metals (e.g. coil coatings, lacquered, plastic coated or electroplated materials). The testing machine is provided with an electro-hydraulic drive and a maximum drawing force of 200 kN. The clear arranged menu navigation via the touch panel (99 freely programmable programs and tool changes) has password-protected levels, which protect against unauthorized access.



Application

When manufacturing deep-drawn products the ingoing material is deformed in all three coordinating planes. Thereby the surface coating should not become defect to avoid subsequent corrosion. For the standard controls and proofs required for the purposes of quality assurance **Model 242-Basic** is particularly suitable to conduct cupping and deep drawing cup tests within the sheet metal thickness range of 0.2 mm to 4.0 mm.

To intensify the tests by further special investigations, it is possible to carry out without any problem a redraw (a second deep drawing operation conducted on the standard cup using a smaller drawing die and drawing punch).

Furthermore the Bead Test Instrument, **Model 227**, can be used to form a bead into the cylindrical wall of a standard cup until a mechanic destruction of the coating is achieved. This is another possibility to intensify the test. The above mentioned sheet thickness range of 0.2 mm to 4.0 mm is based on material with a tensile strength of 400 N/mm². In case of a higher/lower tensile strength the values mentioned concerning the maximum sheet thickness that can be drawn, are to be reduced/increased.

Purpose

The following reasons are important for using the Cupping and Deep Drawing Cup Test Machine, **Model 242-Basic**, for quality assurance, research and development:

- Lowering of the reject rate by concerted monitoring of the coating quality during production or in the process department.
- Immediate sorting out of lower quality arriving at the goods inwards department by means of the ERICHSEN cupping test or the deep drawing cup test. Without special test preparations it is possible to establish, if the material supplied corresponds to the prescribed properties.

- The sturdy construction and hydraulic operation ensure a wear-resistant functioning of the machine so that high accuracy of the test results at low maintenance and working expenses is guaranteed.

Description

The machine consists of a solid housing made of steel into which the test aggregate (test cylinder with work piston, sheet holder plate and die) are integrated. All components are easily accessible from outside the machine, and thus the tools for the individual tests can be changed quickly, too. The operating sequence of the testing machine has been designed in such a comfortable manner that cutting of the blank as well as drawing and ejecting of the cup are executed in one single operation.

Accessories (optional)

- In addition to various cylindrical test tools for deformation and redraw, test tools for e.g. the square cup test are also available.

Technical Data

Drawing force, max.	200 kN
Blank holding force	0,5 - 30 kN / 10 - 100 kN
Drawing punch stroke, approx.	80 mm
Blank holder stroke, approx.	38 mm
Blanking force, max.	265 kN
Opening for sheet insert, max. width	125 mm
Drawing speed approx.	500 mm/min

Power supply	400 V, 3 ~, 50 Hz
Power required	approx. 3.0 kW

Dimensions, approx.	Height	1320 mm
	Width	810 mm
	Depth	1100 mm

Weight net, approx.	600 kg
---------------------	--------

Order Information

Order No.	Product Description
02890431	Cupping and Deep Drawing Cup Test Machine, Model 242-Basic

Subject to technical modifications.
Group 1 - TBE 242-Basic – VII/2022

**Selection table for drawing dies B1/C2
(#01370132)**

valid for **ferritic and non-ferritic** material
(material type necessary for order)
Norm: ERICHSEN

Var.	Thickness s / mm	Var.	Thickness s / mm
1	0,076	28	0,85
2	0,100	29	0,90
3	0,127	30	0,95
4	0,13	31	1,00
5	0,14	32	1,10
6	0,15	33	1,15
7	0,18	34	1,20
8	0,20	35	1,25
9	0,21	36	1,30
10	0,23	37	1,40
11	0,24	38	1,50
12	0,25	39	1,60
13	0,26	40	1,70
14	0,27	41	1,80
15	0,28	42	1,90
16	0,30	43	2,00
17	0,32	44	2,10
18	0,35	45	2,20
19	0,40	46	2,30
20	0,45	47	2,40
21	0,50	48	2,50
22	0,55	49	2,60
23	0,60	50	2,65
24	0,65	51	2,70
25	0,70	52	2,8
26	0,75	53	2,9
27	0,80	54	3,0

**Selection table for drawing dies B1/C2
(#01370132)**

valid for **aluminium and aluminium alloy**
Norm: DIN EN 1669

valid for Clearance ratio 1,15 bis 1,52		valid for Clearance ratio 1,34 bis 1,76	
Var.	Thickness s / mm	Var.	Thickness s / mm
1	0,095 < s ≤ 0,120	1	0,080 < s ≤ 0,100
2	0,121 < s ≤ 0,150	2	0,101 < s ≤ 0,125
3	0,151 < s ≤ 0,185	3	0,126 < s ≤ 0,157
4	0,186 < s ≤ 0,235	4	0,158 < s ≤ 0,195
5	0,236 < s ≤ 0,280	5	0,196 < s ≤ 0,240
6	0,281 < s ≤ 0,345	6	0,241 < s ≤ 0,290
7	0,346 < s ≤ 0,435	7	0,291 < s ≤ 0,360
8	0,436 < s ≤ 0,535	8	0,361 < s ≤ 0,450
9	0,536 < s ≤ 0,665	9	0,451 < s ≤ 0,555
10	0,666 < s ≤ 0,800	10	0,556 < s ≤ 0,670
11	0,801 < s ≤ 0,940	11	0,671 < s ≤ 0,800
12	0,941 < s ≤ 1,130	12	0,801 < s ≤ 0,965
13	1,131 < s ≤ 1,450	13	0,966 < s ≤ 1,250
14	1,451 < s ≤ 1,900	14	1,251 < s ≤ 1,600
15	1,901 < s ≤ 2,350	15	1,601 < s ≤ 2,000
16	2,351 < s ≤ 2,900	16	2,001 < s ≤ 2,400
17	2,901 < s ≤ 3,500	17	2,401 < s ≤ 3,000

**Selection table for drawing dies C1
(#01410132)**

valid for **ferritic and non-ferritic** material
(material type necessary for order)
Norm: ERICHSEN

Var.	Thickness s / mm	Var.	Thickness s / mm
1	0,076	28	0,85
2	0,100	29	0,90
3	0,127	30	0,95
4	0,13	31	1,00
5	0,14	32	1,10
6	0,15	33	1,15
7	0,18	34	1,20
8	0,20	35	1,25
9	0,21	36	1,30
10	0,23	37	1,40
11	0,24	38	1,50
12	0,25	39	1,60
13	0,26	40	1,70
14	0,27	41	1,80
15	0,28	42	1,90
16	0,30	43	2,00
17	0,32	44	2,10
18	0,35	45	2,20
19	0,40	46	2,30
20	0,45	47	2,40
21	0,50	48	2,50
22	0,55	49	2,60
23	0,60	50	2,65
24	0,65	51	2,70
25	0,70	52	2,8
26	0,75	53	2,9
27	0,80	54	3,0

**Selection table for drawing dies B2/C3
(#01430132)**

valid for **ferritic and non-ferritic** material
(material type necessary for order)
Norm: ERICHSEN

Var.	Thickness s / mm	Var.	Thickness s / mm
1	0,076	43	2,00
2	0,100	44	2,10
3	0,127	45	2,20
4	0,13	46	2,30
5	0,14	47	2,40
6	0,15	48	2,50
7	0,18	49	2,60
8	0,20	50	2,65
9	0,21	51	2,70
10	0,23	52	2,8
11	0,24	53	2,9
12	0,25	54	3,0
13	0,26	55	3,1
14	0,27	56	3,2
15	0,28	57	3,3
16	0,30	58	3,4
17	0,32	59	3,5
18	0,35	60	3,6
19	0,40	61	3,7
20	0,45	62	3,8
21	0,50	63	3,9
22	0,55	64	4,0
23	0,60	65	4,1
24	0,65	66	4,2
25	0,70	67	4,3
26	0,75	68	4,4
27	0,80	69	4,5
28	0,85	70	4,6
29	0,90	71	4,7
30	0,95	72	4,8
31	1,00	73	4,9
32	1,10	74	5,0
33	1,15	75	5,1
34	1,20	76	5,2
35	1,25	77	5,3
36	1,30	78	5,4
37	1,40	79	5,5
38	1,50	80	5,6
39	1,60	81	5,7
40	1,70	82	5,8
41	1,80	83	5,9
42	1,90	84	6,0

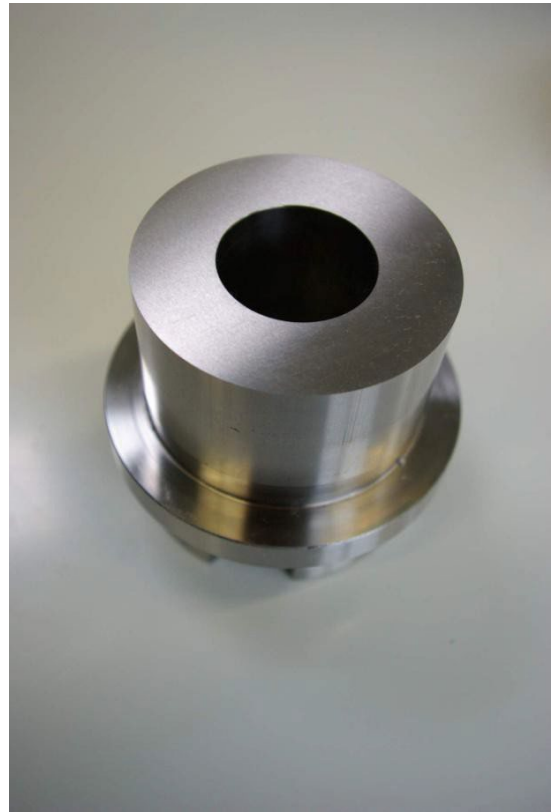
Selection table for drawing dies for square cups 40x40 (#01530132)

valid for **ferritic and non-ferritic** material
(material type necessary for order)

Norm: ERICHSEN

Var.	Blehdicke s / mm	Var.	Blehdicke s / mm
1	0,10	20	0,85
2	0,15	21	0,90
3	0,20	22	0,95
4	0,22	23	1,00
5	0,23	24	1,10
6	0,24	25	1,20
7	0,25	26	1,25
8	0,26	27	1,30
9	0,30	28	1,40
10	0,35	29	1,50
11	0,40	30	1,60
12	0,45	31	1,70
13	0,50	32	1,80
14	0,55	33	1,90
15	0,60	34	2,00
16	0,65	35	2,30
17	0,70	36	2,50
18	0,75	37	2,60
19	0,80	38	3,00

Selection table for blanking tools



Blanking tool for deep-drawing cups blank cut with punch dia 33 mm (B1):

- consists of blanking die ring (# 01380132) and blanking punch (01390132)

for ferritic material:

- 55 – 80 mm
- 64 mm recommended

for non-ferritic material:

- DIN EN 1669 / 60 or 64 mm

Punching areas for sheet thicknesses of ferritic materials:

- 0,2 – 1,0 mm
- 1,1 – 2,5 mm

Punching areas for sheet thicknesses of non-ferritic materials:

- 0,1 – 0,59 mm
- 0,6 – 1,69 mm
- 1,7 – 3,0 mm

Blanking tool for deep-drawing cups blank cut with punch dia 50 mm (B2):

- consists of blanking die ring (# 01440132) and blanking punch (01450132)

for ferritic material:

- 81 - 120 mm
- 90 mm recommended
- Square cups 40 x 40 approx. 85 mm (blanking punch # 04190132)

Punching areas for sheet thicknesses of ferritic materials:

- 0,2 – 1,0 mm
- 1,1 – 2,0 mm
- 2,1 – 4,0 mm
- 4,1 – 6,0 mm

Punching areas for sheet thicknesses of non-ferritic materials:

- 0,1 – 0,59 mm
- 0,6 – 1,69 mm
- 1,7 – 3,0 mm

Wiper rings:

Wiper ring (# 30720032) for a specific punching area:

- Ø 50-55mm
- Ø 55-67mm
- Ø 68-80mm
- Ø 80-100mm
- Ø 101-120mm

