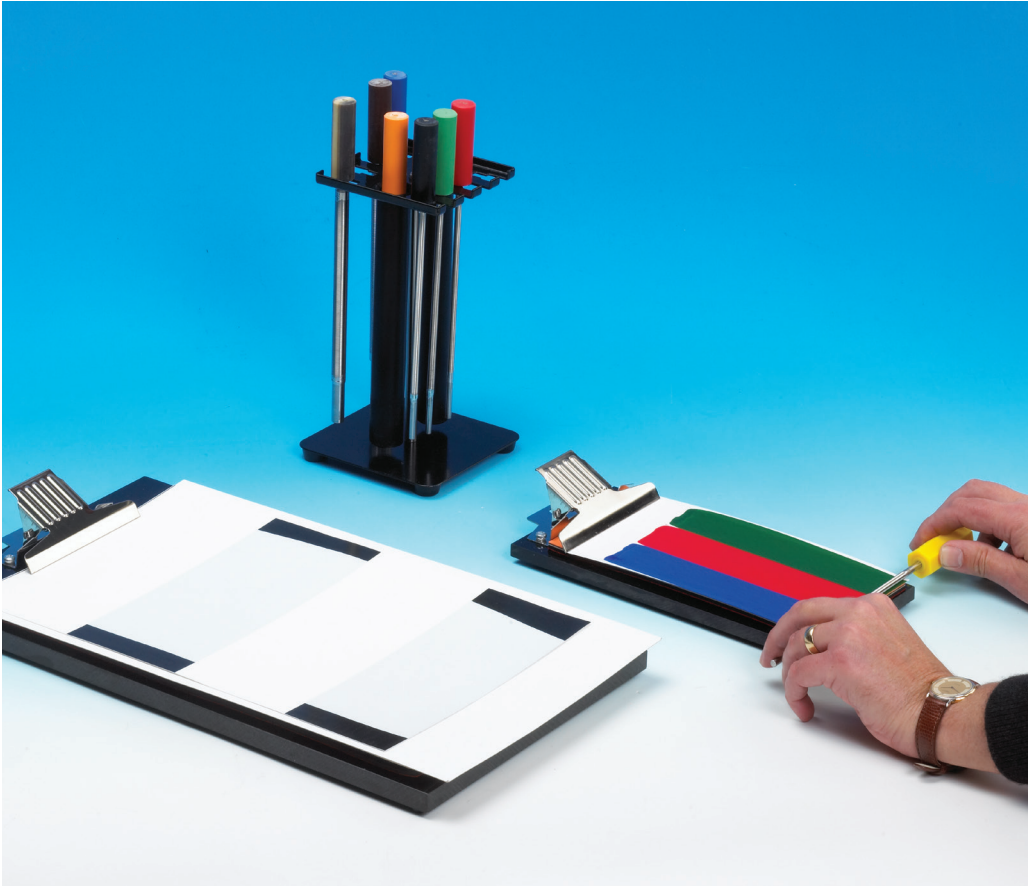


K HAND COATER



Above: Small K Hand Coater with cleaning/storage rack. Three liquid inks being applied simultaneously. Also shown, Large K Hand Coater with a contrast test card.

The K Hand Coater provides a simple but effective means of applying paints, printing inks, lacquers, adhesives and other surface coatings onto many substrates including paper, board, plastic films, foils, metal plates, glass plates, wood etc.

Two or more coatings can be applied side-by-side in a single operation making the system ideal for comparing products.

MAIN FEATURES

- Coating areas: Small Set 11 x 18 cm, Large Set 22 x 34 cm
- Simple, economical
- Will deposit from 4 to 500 micron wet film thickness
- Good repeatability with special impression bed
- Stainless steel rods and wire used for K Bars
- K Bars are numbered and colour coded
- Two or more products coated simultaneously for comparison



REPEATABLE
SAMPLES



RESEARCH +
DEVELOPMENT



QUALITY
CONTROL



GLOBAL
SUPPORT

K HAND COATER



K101 CONTROL COATER

With just a little practice, K Hand Coaters produce a uniform and repeatable coating. However, for those users where repeatability is critical (e.g. when used for computer colour matching) or when a number of operators will be carrying out the test work, we have developed the K Control Coater illustrated above. This automatic machine (detailed on a separate leaflet) has variable speed and a constant pressure exerted between the bar and substrate.

ORDERING

SMALL STARTER SET

- 1 small impression bed (coating area 11 x 18 cm)
- Supplied with 4 short K Bars No's 1 - 4 unless specified otherwise
- 1 short cleaning/storage rack
- 500 sheets proofing paper 12 x 21 cm

LARGE STARTER SET

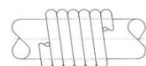
- 1 large impression bed (coating area 22 x 34 cm)
- Supplied with 4 long K Bars No's 1 - 4 unless specified otherwise
- 1 long cleaning/storage rack
- 500 sheets proofing paper 18 x 31 cm

Alternatively, all items can be ordered individually.

K BAR COATING

Wired K Bars are produced by winding precision drawn stainless steel wire onto a stainless steel rod resulting in a pattern of identically shaped grooves. These grooves precisely control the wet film thickness. Close wound bars will produce coating thicknesses from 4 to 120µm. Still higher coating weights up to 500µm can be obtained using open wound bars.

STANDARD K BARS



Close Wound



Open Wound

BAR No.	COLOUR CODE	WIRE DIAMETER		WET FILM DEPOSIT		BAR No.	WIRE DIAMETER		WET FILM DEPOSIT	
		INCH	MM	INCH	µM		INCH	MM	INCH	µM
0	White	0.002	0.05	0.00015	4	150	0.010	0.25	0.006	150
1	Yellow	0.003	0.08	0.00025	6	200	0.014	0.36	0.008	200
2	Red	0.006	0.15	0.0005	12	300	0.020	0.51	0.012	300
3	Green	0.012	0.30	0.0010	24	400	0.030	0.76	0.016	400
4	Black	0.020	0.51	0.0015	40	500	0.040	1.00	0.020	500
5	Horn	0.025	0.64	0.0020	50					
6	Orange	0.030	0.76	0.0025	60					
7	Brown	0.040	1.02	0.0030	80					
8	Blue	0.050	1.27	0.0040	100					
9	Tan	0.060	1.52	0.0050	120					

Special K Bars to apply intermediate wet film deposits are manufactured to customer requirements. We stock wire diameters giving the choice of the following deposits (microns) when close wound.

4, 6, 8, 9, 10, 12, 14, 15, 16, 18, 20, 22, 24, 26, 28, 30, 32, 34, 36, 35, 38, 40, 42, 44, 46, 48, 50, 52, 54, 56, 58, 60, 62, 64, 66, 68, 70, 72, 76, 80, 84, 86, 88, 90, 92, 96, 100, 102, 104, 108, 110, 112, 116, 120, 128, 130, 140, 150, 160.

We also manufacture both wired metering bars and plain smoothing bars to fit all laboratory and production width coaters.

ERICHSEN
since 1910

ERICHSEN GmbH & Co. KG
Hemer/Germany
eMail: info@erichsen.de



eMail: sales@rkprint.com