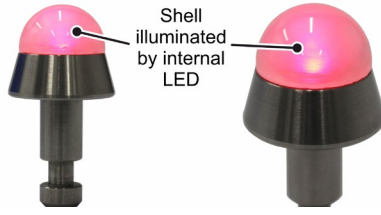


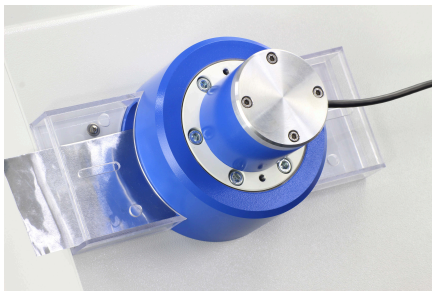


Light of luminous punch shining through crack



Ball punch made from translucent alumina-based ceramics

Transmission-Illumination-Based Crack Detection



Camera with magnetic mount used for crack detection



Charging station



Example (Mod. 111)

testing equipment for quality management

ERICHSEN
since 1910



Mounting bracket



Contact-free on-off switch



Crack detection system compatible with ERICHSEN Sheet Metal Testing Machines

Information		
Order No.	Product Name	Price/EURO/pc.
	For Models 102 and 111:	
31000132	<p><u>Test Tool “illuminated ball punch” (set)</u> suitable for sheets and metallic foils up to a thickness of 0.2 mm; max. permissible strengths of sheets: 1000 MPa at 0.05 mm / 500 MPa at 0.1 mm / 250 MPa at 0.2 mm. The set consists of an illuminated ball punch 20 mm Ø, camera with USB cable, magnetic pen (on/off), mounting bracket, charging station, PC with evaluation software, monitor, keyboard and mouse. <i>Retrofitting older models without a touch display is possible (price on request).</i></p>	15,900.00
	For Models 134, 142-20, 142-40, 145-60, 146-60:	
31000132	<p><u>Test Tool “illuminated ball punch” (set)</u> suitable for sheets and metallic foils up to a thickness of 0.2 mm; max. permissible strengths of sheets: 1000 MPa at 0.05 mm / 500 MPa at 0.1 mm / 250 MPa at 0.2 mm. The set consists of an illuminated ball punch 20 mm Ø, camera with USB cable, magnetic pen (on/off), mounting bracket, charging station, PC with evaluation software, monitor, keyboard and mouse. <i>Retrofitting older models without a touch display is possible (price on request).</i></p>	15,900.00
	<p><u>Adapter for the test tool “illuminated ball punch” required to attach the camera holder. (see price list)</u></p>	189.00
	For Models 142-20 Basic, 142-40 Basic, 145-60 Basic:	
31000232	<p><u>Test Tool “illuminated ball punch” (set)</u> suitable for sheets and metallic foils up to a thickness of 0.2 mm; max. permissible strengths of sheets: 1000 MPa at 0.05 mm / 500 MPa at 0.1 mm / 250 MPa at 0.2 mm. The set consists of an illuminated ball punch 20 mm Ø, drawing die and sheet holder ring; camera with USB cable, magnetic pen (on/off), mounting bracket, charging station, PC with evaluation software, monitor, keyboard and mouse.</p>	17,129.00
	<p><u>Adapter for the test tool “illuminated ball punch” required to attach the camera holder. (see price list)</u></p>	189.00

XI/2023